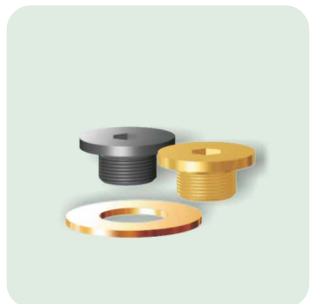
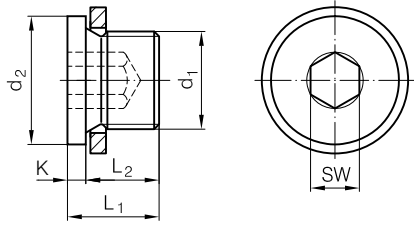


**2542** 5.8

DIN 908

**KERN** 20  
PART SERVER 30

**2543** Ms



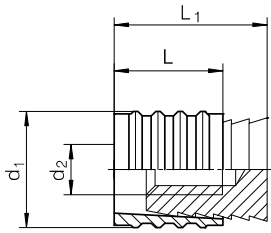
DIN 908 Mat.: 5.8

**2542/2543 - d<sub>1</sub>**

d <sub>2</sub>	L <sub>1</sub>	L <sub>2</sub>	K	SW	d <sub>1</sub>	2542	2543
14	11	8	3	5	M10x1	■	■
17	15	12		6	M12x1,5	■	■
19					M14x1,5	■	■
18	18	14	4	8	G1/4"	■	■
22				G3/8"	■	■	
26				G1/2"	■	■	

**2544**

**KERN** 20  
PART SERVER 30



**2544 - D**

L <sub>1</sub>	L	d <sub>2</sub>	D
11,5	8	M3	6
11,5	8	M4	8
14	10	M6	10
14	10	M6	12
16	12	M8	16