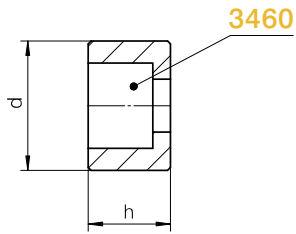


2246 H



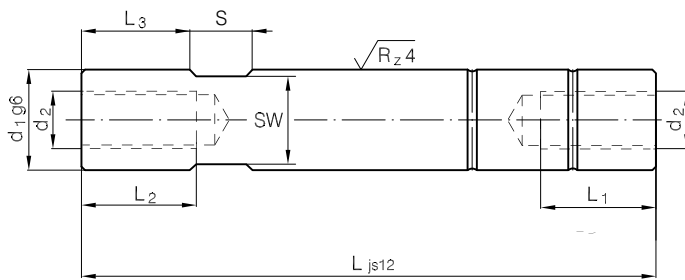
Mat.: 1.1191



2246 H - d

3460	h	d
M6	10	15
M8	14	22
M10	20	36
M12	25	46
M16	32	56

2246.1 H



Mat.: 1.7131 60 ± 2HRc



2246.1 H - d₁ x L

L ₁	L ₂	L ₃	S	SW	d ₂	d ₁	L							
10	16	14	8	9	6	10	60							
							70							
							80							
							100							
							120							
							140							
17	25	14	8	12	8	14	60							
							70							
							80							
							100							
							120							
							140							
20	30	16	8	14	10	18	70							
							80							
							100							
							120							
							140							
							160							
		10	16	14	10	17	12	20	80					
									100					
									120					
									140					
									160					
									180					
25	35	22	12	19	16	30	180							
							200							
							220							
							240							
							260							
							280							
30	45	28	16	24	20	40	260							
							280							
							300							
							320							
							340							
							360							
35	55	36	20	36	20	40	260							
							300							
							340							
							380							