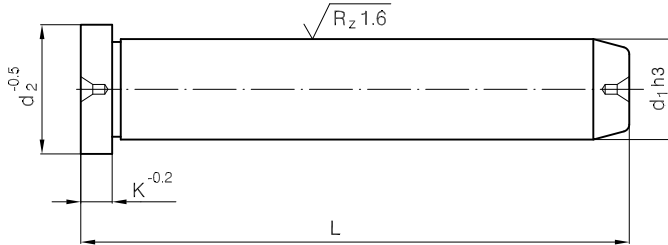


## 2255 H



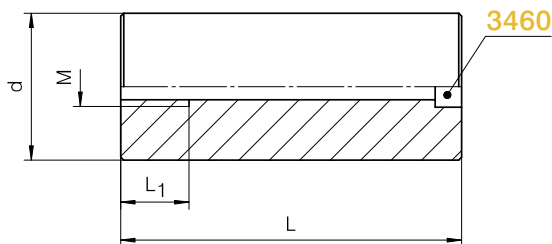
Mat.: 1.7131 60 ± 2HRc



### 2255 H - d<sub>1</sub> x L

K	d <sub>2</sub>	d <sub>1</sub>	L
4	16	12	80
			100
			120
6	22	18	120
			140
			160
			160
			200
36	30	30	160
			240

## 2256 H



Mat.: 1.1191 750 N/mm<sup>2</sup>



### 2256 H - d x L

3460	M	L <sub>1</sub>	d	L				
M6	M8	15	32	46				
				56				
				76				
M8	M10	20	40	46				
				56				
				66				
				76				
				86				
				96				
				116				
				M10	M12	25	80	46
								56
66								
76								
86								
96								
116								