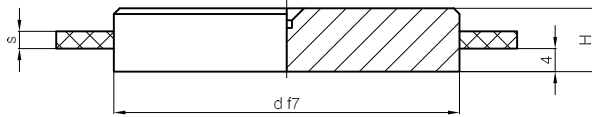


## 2345.1 H



Mat.: 1.1191



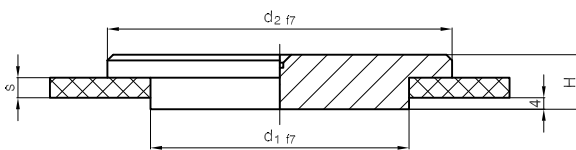
### 2345.1 H - dx H

s	d	H
-	40	6
3		9
-	60	8
3		11
5		13
-	80	8
3		15
5		17
-	90	12
3		15
5		17
7		19
8,5		21

s	d	H
-	100	12
8,5		21
-	110	12
8,5		21
-	120	12
8,5		21
-	125	8
-		12
5,0		18
8,5	130	21
-		12
-	140	12
-	150	12

s	d	H
8,5	150	21
-		8
-	160	12
5,0		20
8,5		23
-	175	12
8,5		21
-	200	12
5		20
8,5		23
-	250	12
8,5		23

## 2345.2 H



Mat.: 1.1191



### 2345.2 H - d<sub>2</sub>x H

s	d <sub>1</sub>	d <sub>2</sub>	H
-	90	60	8
3			11
5			13
-		80	12
3			15
5			17
-		100	12
3			15
5			17
7			19
8,5	21		
-	110	12	
3		15	
5		17	

s	d <sub>1</sub>	d <sub>2</sub>	H
7	90	110	19
8,5			21
-		120	12
3			15
5			17
7		125	19
8,5			21
-		125	12
3			15
5			17
7	140	19	
8,5		21	
-	150	12	

s	d <sub>1</sub>	d <sub>2</sub>	H
-	90	160	12
3			15
5			17
7		175	19
8,5			21
-			12
3		175	15
5			17
7			19
8,5		200	21
-	12		
-	250	12	